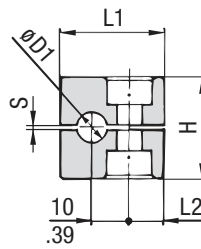
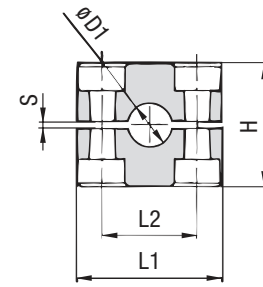


Clamp Body - Profiled Design

Profiled Inside Surface with Tension Clearance



STAUFF Group 1



STAUFF Group 1A to 8

Ordering Codes

Clamp Body

Clamp Body, STAUFF Group 1A

*1*06-*PP

*1*06A-*PP

One clamp body is consisting of two clamp halves.

* STAUFF Group

1

* Exact outside diameter Ø D1 (mm)

06

* Material code (see below)

PP

Standard Materials



Polypropylene

Colour: Green
Material code: **PP**



Polypropylene

Colour: Black
Material code: **PP-BK**



Polyamide

Colour: Black
Material code: **PA**



Thermoplastic Elastomer (87 Shore-A)

Colour: Black
Material code: **SA**



Aluminium

Colour: Self-Colour
Material code: **AL** (STAUFF Group 1A to 6)

See pages 154 / 155 for material properties and technical information.

Special Materials

Please contact STAUFF for further details on fire-proof clamp body materials, tested and approved according to several international fire-protection standards (such as BS 6853, EN 45545-2, UL 94 and many more).

See pages 156 / 157 for material properties and technical information.

Product Features

- Proven, tested and trusted product in various markets
- Recommended for the safe installation of rigid pipes and tubes
- Available for all commonly used pipe and tube outside diameters
- Environmental protection due to vibration/noise reducing design
- Excellent weathering resistance, even under extreme conditions

Group	STAUFF	DIN	Outside Diameter Pipe / Tube		Nominal Bore Pipe (in)	Copper Tube ASTM B88 (in)	Ordering Codes (2 Clamp Halves) (** = Material)	Dimensions (mm/in)						
			Ø D1 (mm)	(in)				L1	L2	H	S min.	Width		
1		0	6				106-**							
			6,4	1/4			106.4-**							
			8	5/16			108-**	28	9,5	27	0,4	30		
			9,5	3/8	1/4		109.5-**	1.10	.37	1.06	.02	1.18		
			10		1/8		110-**							
1A		1	6				106A-**							
			6,4	1/4			106.4A-**							
			8	5/16			108A-**	37	20	27	0,4	30		
			9,5	3/8	1/4		109.5A-**	1.46	.79	1.06	.02	1.18		
			10		1/8		110A-**							
2		2	12				112-**							
			12,7	1/2	3/8		212.7-**							
			13,5		1/4		213.5-**							
			14				214-**							
			15				215-**	42	26	33	0,6	30		
3		3	16	5/8	1/2		216-**	1.65	1.02	1.30	.02	1.18		
			17,2		3/8		217.2-**							
			18				218-**							
			19	3/4			319-**							
			20				320-**							
4		4	21,3		1/2		321.3-**	50	33	36	0,6	30		
			22	7/8	3/4		322-**	1.97	1.30	1.42	.02	1.18		
			25				325-**							
			25,4	1			325.4-**							
			26,9		3/4		426.9-**							
5		5	28				428-**							
			28,6		1		428.6-**	59	40	42	0,6	30		
			30				430-**	2.32	1.57	1.65	.02	1.18		
			32				432-**							
			32	1-1/4			532-**							
6		6	33,7		1		533.7-**							
			35			1-1/4	535-**							
			38	1-1/2			538-**	71	52	58	0,8	30		
			40				540-**	2.80	2.05	2.28	.03	1.18		
			41,3		1-1/2		541.3-**							
7		7	42		1-1/4		542-**							
			44,5	1-3/4			644.5-**							
			48,3		1-1/2		648.3-**	86	66	66	0,8	30		
			50,8	2			650.8-**	3.39	2.60	2.60	.03	1.18		
			54		2		654-**							
8		8	57,2	2-1/4			757.2-**							
			60,3		2		760.3-**							
			63,5	2-1/2			763.5-**	121	94	93	0,8	30		
			70	2-3/4			770-**	4.76	3.70	3.66	.03	1.18		
			73		2-1/2 (ANSI B 36-10)		773-**							
8		8	76,1	3	2-1/2 (DIN EN 10220)		776.1-**							
			88,9		3		888.9-**	147	120	118	0,8	30		
			102	4	3-1/2		8102L-**	5.79	4.72	4.65	.03	1.18		

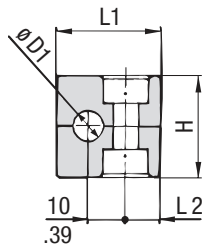
Additional outside diameters are available upon request. Please contact STAUFF for further information.

Dimensional drawings: All dimensions in mm (in).

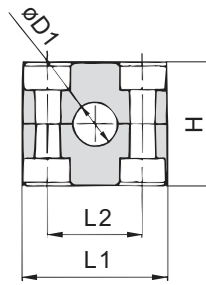


Clamp Body - Type H

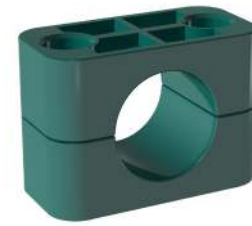
Smooth Inside Surface without Tension Clearance



STAUFF Group 1



STAUFF Group 1A to 8



A

Group	STAUFF	DIN	Outside Diameter		Ordering Codes (2 Clamp Halves)	Dimensions (mm/in)			
			Hose Ø D1 (mm)	(in)		(** - H = Material)	L1	L2	H
1	0	6			106-**-H				
		6,4	1/4	106.4-**-H					
		8	5/16	108-**-H	28	9,5	26	30	
		9,5	3/8	109.5-**-H	1.10	.37	1.02	1.18	
		10		110-**-H					
		12		112-**-H					
1A	1	6			106A-**-H				
		6,4	1/4	106.4A-**-H					
		8	5/16	108A-**-H	37	20	26	30	
		9,5	3/8	109.5A-**-H	1.46	.79	1.02	1.18	
		10		110A-**-H					
		12		112A-**-H					
2	2	12,7	1/2	212.7-**-H					
		13,5		213.5-**-H					
		14		214-**-H	42	26	32	30	
		15		215-**-H	1.65	1.02	1.26	1.18	
		16	5/8	216-**-H					
		17,2		217.2-**-H					
3	3	18		218-**-H					
		19	3/4	319-**-H					
		20		320-**-H					
		21,3		321.3-**-H	50	33	35,5	30	
		22	7/8	322-**-H	1.97	1.30	1.40	1.18	
		25		325-**-H					
4	4	25,4	1	325.4-**-H					
		26,9		426.9-**-H					
		28		428-**-H	59	40	41,5	30	
		30		430-**-H	2.32	1.57	1.63	1.18	
		32		432-**-H					
		32	1-1/4	532-**-H					
5	5	33,7		533.7-**-H					
		35		535-**-H	71	52	56,5	30	
		38	1-1/2	538-**-H	2.80	2.05	2.22	1.18	
		40		540-**-H					
		42		542-**-H					
		44,5	1-3/4	644.5-**-H					
6	6	48,3		648.3-**-H	86	66	64,5	30	
		50,8	2	650.8-**-H	3.39	2.60	2.54	1.18	
		54		654-**-H					
		57,2	2-1/4	757.2-**-H					
		60,3		760.3-**-H					
		63,5	2-1/2	763.5-**-H	121	94	92	30	
7	7	70	2-3/4	770-**-H	4.76	3.70	3.62	1.18	
		73		773-**-H					
		76,1	3	776.1-**-H					
		88,9		888.9-**-H	147	120	116	30	
		102	4	8102L-**-H	5.79	4.72	4.57	1.18	

Additional outside diameters are available upon request. Please contact STAUFF for further information.

Ordering Codes

Clamp Body *1*06-*PP-H
Clamp Body, STAUFF Group 1A *1*06A-*PP-H

One clamp body is consisting of two clamp halves.

* STAUFF Group 1
 * Exact outside diameter Ø D1 (mm) 06
 * Material code (see below) PP-H

Standard Materials



Polypropylene
 Colour: Green
 Material code: **PP-H**



Polypropylene
 Colour: Black
 Material code: **PP-H-BK**



Polyamide
 Colour: Black
 Material code: **PA-H**



Thermoplastic Elastomer (87 Shore-A)
 Colour: Black
 Material code: **SA-H**

See pages 154 / 155 for material properties and technical information.

Special Materials

Please contact STAUFF for further details on fire-proof clamp body materials, tested and approved according to several international fire-protection standards (such as BS 6853, EN 45545-2, UL 94 and many more).

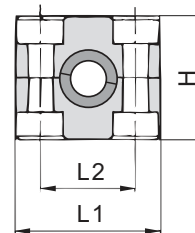
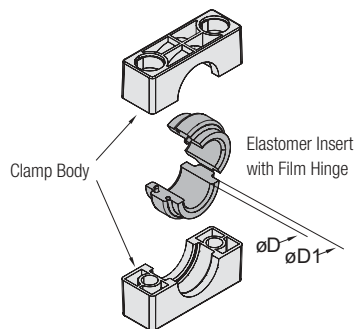
See pages 156 / 157 for material properties and technical information.

Product Features

- Proven, tested and trusted product in various markets
- Recommended for the safe installation of hoses and cables
- Chamfered edges avoid damaging of the hoses and cables
- Available for all commonly used hose and cable outside diameters
- Excellent weathering resistance, even under extreme conditions



Clamp Body with Elastomer Insert Type RI



A

Ordering Codes

Clamp Assembly ***4*06-*PP-R**

One assembly is consisting of one clamp body and one insert.

- * STAUFF Group **4**
- * Exact outside diameter Ø D (mm) **06**
- * Material code (see below) **PP-R**

Clamp Body ***4-*PP-R**

One clamp body is consisting of two clamp halves.

- * STAUFF Group **4**
- * Material code (see below) **PP-R**

Elastomer Insert ***RI-*06-*4/4S**

- * Elastomer Insert **RI**
- * Exact outside diameter Ø D (mm) **06**
- * STAUFF Group 4 (Standard) and 4S (Heavy) **4/4S**
- 6 (Standard) and 5S (Heavy) **6/5S**

Standard Materials



Polypropylene
Colour: Black
Material code: **PP-R**



Polyamide
Colour: Black
Material code: **PA-R**



Elastomer Insert
Thermoplastic Elastomer (73 Shore-A)
Colour: Black

See pages 154 / 155 for material properties and technical information.

Special Materials

Please contact STAUFF for further details on fire-proof clamp body materials, tested and approved according to several international fire-protection standards (such as BS 6853, EN 45545-2, UL 94 and many more).

See pages 156 / 157 for material properties and technical information.

Product Features

- Proven, tested and trusted product in various markets
- Either for the extra vibration/noise reducing installation of pipes and tubes or the extra gentle installation of hoses and cables
- Available for all commonly used outside diameters
- Excellent weathering resistance, even under extreme conditions

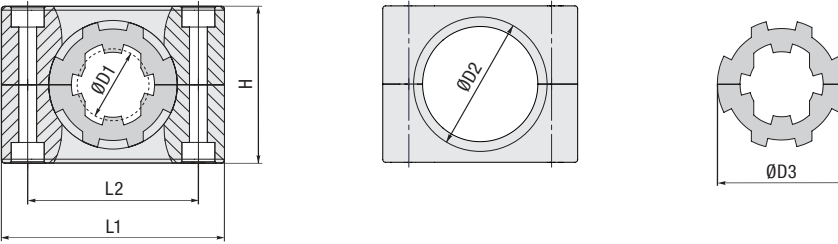
Group	STAUFF	DIN	Outside Diameter Pipe / Tube / Hose		Ordering Codes Clamp Assembly (Clamp Body + Insert)	(**R = Clamp Body Material)			Dimensions (mm/in)					
			Ø D (mm)	(in)		Clamp Body (2 Clamp Halves)	Clamp Body	Insert *	Ø D1	L1	L2	H	Width	
4	4	4	6		406-**-R	4-**-R			RI-06-4/4S	25 .98	59 2.32	40 1.57	41,2 1.62	30 1.18
			8	5/16	408-**-R				RI-08-4/4S					
			10		410-**-R				RI-10-4/4S					
			12		412-**-R				RI-12-4/4S					
			12,7	1/2	412.7-**-R				RI-12.7-4/4S					
			14		414-**-R				RI-14-4/4S					
			15		415-**-R				RI-15-4/4S					
			16	5/8	416-**-R				RI-16-4/4S					
			17,2		417.2-**-R				RI-17.2-4/4S					
			18		418-**-R				RI-18-4/4S					
			19	3/4	419-**-R				RI-19-4/4S					
6	6	6	20		620-**-R	6-**-R			RI-20-6/5S	38 1.50	86 3.39	66 2.60	64,5 2.54	30 1.18
			21,3		621.3-**-R				RI-21.3-6/5S					
			22	7/8	622-**-R				RI-22-6/5S					
			25		625-**-R				RI-25-6/5S					
			26,9		626.9-**-R				RI-26.9-6/5S					
			28		628-**-R				RI-28-6/5S					
			30		630-**-R				RI-30-6/5S					
			32	1-1/4	632-**-R				RI-32-6/5S					

* Elastomer Inserts for Standard Series clamp bodies, STAUFF Group 4 also fit into Heavy Series clamp bodies, STAUFF Group 4S. Elastomer Inserts for Standard Series clamp bodies, STAUFF Group 6 also fit into Heavy Series clamp bodies, STAUFF Group 5S.

Additional outside diameters are available upon request. Please contact STAUFF for further information.



Noise Reduction Clamp
Type NRC



A

Group	STAUFF	DIN	Outside Diameter Pipe / Tube		Ordering Codes Clamp Assembly (Clamp Body + NRC Insert)	Clamp Body (2 Clamp Halves)	NRC Insert (2 Insert Halves)	Dimensions (mm/in)						
			Ø D1 (mm)	(in)				ØD2	ØD3	L1	L2	H	Width	
2	2	2	6		206-PP-NRC	2-PP-NRC	RI-NRC-6-2							
			8	5/16	208-PP-NRC		RI-NRC-8-2							
			10		210-PP-NRC		RI-NRC-10-2	25	26	42	26	32	30	
			12		212-PP-NRC		RI-NRC-12-2	.98	1.02	1.65	1.02	1.26	1.18	
			12,7	1/2	212.7-PP-NRC		RI-NRC-12.7-2							
3	3	3	14		314-PP-NRC	3-PP-NRC	RI-NRC-14-3							
			15		315-PP-NRC		RI-NRC-15-3	28	29	50	33	35,5	30	
			16	5/8	316-PP-NRC		RI-NRC-16-3	1.10	1.14	1.97	1.30	1.40	1.18	
4	4	4	18		418-PP-NRC	4-PP-NRC	RI-NRC-18-4	34	35	59	40	41,5	30	
			20		420-PP-NRC		RI-NRC-20-4	1.34	1.38	2.32	1.57	1.63	1.18	
5	5	5	21,3		521.3-PP-NRC	5-PP-NRC	RI-NRC-21.3-5							
			22	7/8	522-PP-NRC		RI-NRC-22-5							
			25		525-PP-NRC		RI-NRC-25-5							
			26,9		526.9-PP-NRC		RI-NRC-26.9-5	49	50	71	52	56,5	30	
			28		528-PP-NRC		RI-NRC-28-5	1.93	1.97	2.80	2.05	2.22	1.18	
			30		530-PP-NRC		RI-NRC-30-5							
6	6	6	32	1-1/4	532-PP-NRC	6-PP-NRC	RI-NRC-32-5							
			33,7		633.7-PP-NRC		RI-NRC-33.7-6							
			35		635-PP-NRC		RI-NRC-35-6							
			38	1-1/2	638-PP-NRC		RI-NRC-38-6	60	61	86	66	64,5	30	
			40		640-PP-NRC		RI-NRC-40-6	2.36	2.40	3.39	2.60	2.54	1.18	
			42		642-PP-NRC	RI-NRC-42-6								

Ordering Codes

Clamp Assembly *2*12-*PP-NRC

One assembly is consisting of one clamp body and one insert.

- * STAUFF Group **2**
- * Exact outside diameter Ø D1 (mm) **12**
- * Material code (see below) **PP-NRC**

NRC Clamp Body *2-*PP-NRC

One NRC clamp body is consisting of two clamp halves.

- * STAUFF Group **2**
- * Material code (see below) **PP-NRC**

NRC Elastomer Insert *RI-NRC-*12-*2

One NRC elastomer insert is consisting of two insert halves.

- * NRC Elastomer Insert **RI-NRC**
- * Exact outside diameter ØD1 (mm) **12**
- * STAUFF Group **2**

Standard Materials

- Polypropylene**
Colour: Black
Material code: **PP-NRC**
- Elastomer Insert**
Thermoplastic Elastomer (73 Shore-A)
Colour: Black

See pages 154 / 155 for material properties and technical information.

Alternative materials are available upon request. Please contact STAUFF for further information.

Special Materials

Please contact STAUFF for further details on fire-proof clamp body materials, tested and approved according to several international fire-protection standards (such as BS 6853, EN 45545-2, UL 94 and many more).

See pages 156 / 157 for material properties and technical information.

Additional outside diameters are available upon request. Please contact STAUFF for further information.

Product Features

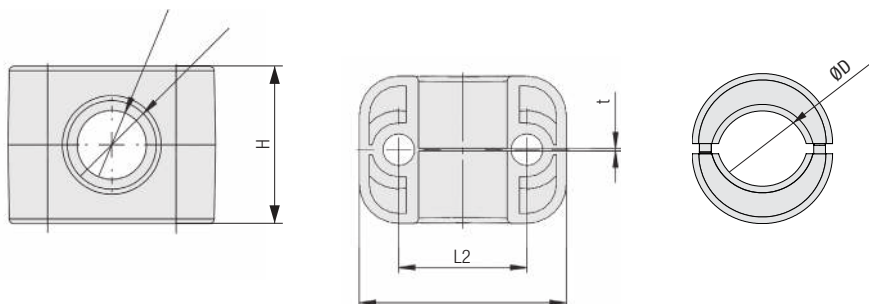
- Designed for the noise and vibration reducing installation of pipes and tubes
- Suitable for the most common outside diameters from 6 to 42 mm and from ¼ to 1 ½ inch respectively
- Working principle based on a specially shaped, two-part elastomer insert, which mechanically absorbs vibration in the pipe or tube and as a result reduces noises arising to a minimum
- Elastomer insert is in particular distinguished by how little of its surface is in contact with the pipe or tube as well as with the clamp body
- Light tension of the elastomer insert in mounted condition provides the necessary clamping force
- Tongue-groove contour of the elastomer insert and the clamp body (which is reversed and thus diverges from standard DIN 3015 clamps with elastomer insert) enables the system to be used for the maximum range of outside diameters per clamp size, which contributes to flexibility, versatility and optimisation of the required installation space



Clamp Body for Conduit Hoses and Cable Inserts

Type CHC

A



Ordering Codes

Clamp Assembly

***3*17-*10/14-*PA-CHC*SA-VO**

One assembly is consisting of one clamp body and one insert. (consisting of two halves).

- * STAUFF Group **3**
- * Nominal Size of the Conduit Hose **17**
- * Diameter Range Cable ØD (mm) **10/14**
- * Material code clamp body (see below) **PA-CHC**
- * Material code insert (see below) **SA-VO**

CHC Clamp Body

***3*17-*PA-CHC**

One CHC Clamp Body is consisting of two clamp halves.

- * STAUFF Group **3**
- * Nominal Size of the Conduit Hose **17**
- * Material code clamp body (see below) **PA-CHC**

CHC Elastomer Insert

***RI-CHC-*10/14*3*SA-VO**

One CHC Elastomer Insert is consisting of two insert halves.

- * CHC Elastomer insert **RI-CHC**
- * Diameter Range Cable ØD (mm) **10/14**
- * STAUFF Group **3**
- * Material code insert (see below) **SA-VO**

Group	Nominal Size	ØD (mm/in)	Ordering Codes (* = Material)			Dimensions (mm/in)						
			Clamp Assembly (Clamp Body + Insert)	Clamp Body (2 Halves)	CHC-Insert (2 Halves)	ØD1	ØD2	t	L1	L2	H	Width
2	2	6 ... 8		210-*		13	11	0,5	42	26	32	30
		.2431				.51	.43	.02	1.65	1.02	1.26	1.18
3	3	8 ... 10		212-*		16	13,5	0,5	42	26	32	30
		.3139				.63	.53	.02	1.65	1.02	1.26	1.18
		7 ... 10	317-7/10-*-*	317-*	RI-CHC-7/10-3-*	21,5	18	0,7	50	33	35,5	30
4	4	10 ... 14	317-10/14-*-*	317-*	RI-CHC-10/14-3-*	.85	.71	.03	1.97	1.30	1.40	1.18
		.2839										
		.3955										
5	5	14 ... 18	423-14/18-*-*	423-*	RI-CHC-14/18-4-*	29	24,5	0,7	59	40	41,5	30
		.5571				1.14	.96	.03	2.32	1.57	1.63	1.18
		18 ... 20		423-*								
6	6	20 ... 26,9		529-*		35	30,5	1,0	71	52	56,5	30
		.79 ... 1.06				1.38	1.20	.04	2.80	2.05	2.22	1.18
		26,9 ... 33,7		536-*		43	38,5	1,0	71	94	92	30
6	6	1.06 ... 1.33				1.69	1.52	.04	2.80	2.05	2.22	1.18
		33,7 ... 42		648-*		55	49,5	1,0	86	66	64,5	30
		1.33 ... 1.65				2.17	1.95	.51	3.39	2.60	2.54	1.18

Additional outside diameters are available upon request. Please contact STAUFF for further information.

Product Features

- Design of the inside surface of the clamp body prevents corrugated conduit hoses from sliding
- Elastomer Insert for the safe and damage-free installation of single cables as an option
- Chamfered edges avoid damaging of the conduit hoses
- Available for all commonly used nominal sizes
- Excellent weathering resistance, even under extreme conditions

Materials



Polyamide
Colour: Black
Material code: **PA-CHC**



fire-proof clamp body material made of Polyamide
Colour: Black
Material code: **PA-VO-CHC-BK**



Elastomer Insert Thermoplastic Elastomer (73 Shore-A)
Colour: Black
Material code: **SA**



Elastomer Insert fire-proof clamp body material made of Thermoplastic Elastomer (86 Shore-A)
Colour: White
Material code: **SA-VO**

See pages 154 - 157 for material properties and technical information.

Alternative materials are available upon request. Please contact STAUFF for further information.

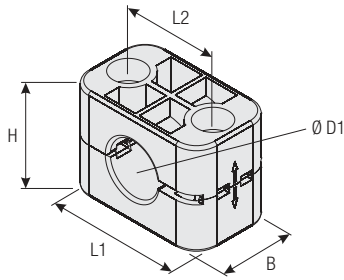
Recommended Bolt Lengths (Socket Cap Screw IS)

for use without Cover Plate DP, assembly with Weld Plate SP, Hexagon Rail Nut SM and Channel Rail Adaptor CRA.

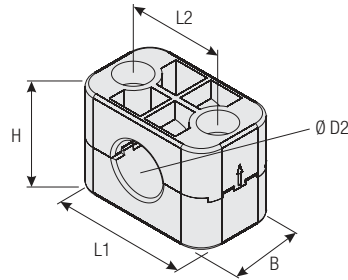
Group	STAUFF	DIN	Metric ISO thread	Unified coarse (UNC) thread
2		2	M6 x 25	1/4-20 UNC x 1
3		3	M6 x 30	1/4-20 UNC x 1-1/8
4		4	M6 x 35	1/4-20 UNC x 1-3/8
5		5	M6 x 50	1/4-20 UNC x 2
6		6	M6 x 60	1/4-20 UNC x 2-1/2

See page 30 for further information on ordering.





For Use with Regular Hose



For Use with Compact Hose
(Upper Clamp Half rotated by 180°)

Group	STAUFF	DIN	Outside Diameter Regular Hose		Outside Diameter Compact Hose		Ordering Codes (2 Clamp Halves)	Dimensions (mm/in)				
			Ø D1 (mm)	(in)	Ø D2 (mm)	(in)		(**-* = Material)	L1	L2	Regular Hose	Compact Hose
3	3	19	.75	17,4	.69	319-**-*-CC-BK						
		22,2	.87	20,6	.81	322.2-**-*-CC-BK	50	33	35,5	34	30	
		25,4	1.00	23,7	.93	325.4-**-*-CC-BK	1.97	1.30	1.40	1.34	1.18	

Additional outside diameters are available upon request. Please contact STAUFF for further information.

Product Features

- Only one clamp body required for two different hose diameters (compact hose + regular hose)
- Rotate upper clamp half by 180° and use clamp body to fasten compact hoses instead of regular hoses
- Available for three different combinations of outside hose diameters
- Outer dimensions according to DIN 3015, Part 1
- Effective cost reduction due to lower inventories

Special Materials

Please contact STAUFF for further details on fire-proof clamp body materials, tested and approved according to several international fire-protection standards (such as BS 6853, EN 45545-2, UL 94 and many more).

See pages 156 / 157 for material properties and technical information.

Ordering Codes

Clamp Body ***3*19-*PP-H-CC-BK**

One clamp body is consisting of two clamp halves.

- * STAUFF Group **3**
- * Outside diameter Ø D1 (mm) of regular hose **19**
- * Material code (see below) **PP-H-CC-BK**



A

Ordering Codes

One clamp body is consisting of two clamp halves.

Clamp Body 540-40-PP-VK
Rectangular design with a square of 40 mm x 40 mm / 1.57 in x 1.57 in

Clamp Body 540-36-PP-VK
Rectangular design with a square of 40 mm x 36 mm / 1.57 in x 1.42 in

Please replace PP by PA to order a clamp body made of Polyamide instead of Polypropylene.

Product Features

- Outer dimensions of clamp body according to Standard Series, STAUFF Group 5
- For proximity switches according to DIN EN 60947-5-2 or similar, rectangular construction, with a square of 40 mm x 40 mm / 1.57 in x 1.57 in or 40 mm x 36 mm / 1.57 in x 1.42 in
- For proximity switches according to DIN EN 60947-5-2 or similar, round construction, please use Standard Series clamp body, STAUFF Group 4, with the diameter required (e.g. 430-PP)
- Use with Hexagon Rail Nut SM and Mounting Rail TS to provide axial and horizontal position adjustment by loosening the bolts

Clamp Body - Rectangular Design Type VK

