

## Y Knuckle



### Ordering code

**F-M16X150 Y**

① ② ③ ④

① Accessories code	② Screw thread	③ Thread pitch	④ Code
	M3: M3	050: 0.5mm	Y:Y Knuckle
	M4: M4	070: 0.7mm	
	M5: M5	080: 0.8mm	
	M6: M6	100: 1.0mm	
	M8: M8	125: 1.25mm	
	M10: M10		
	M12: M12		
	M14: M14		
	M16: M16	150: 1.5mm	
	M18: M18		
	M20: M20		
	M22: M22		
	M26: M26	200: 2.0mm	
	M27: M27		
	M36: M36		
	M42: M42		

Table for Y knuckle and cylinder

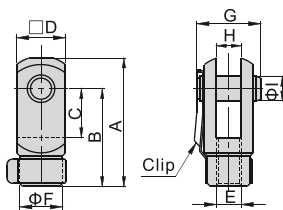
Cylinder Accessory	SE						SI/SIL/SIF								
	32	40	50	63	80	100	32	40	50	63	80	100	125	160	200
F-M10X125Y	●						●								
F-M12X125Y		●						●							
F-M16X150Y			●	●					●	●					
F-M20X150Y					●	●					●	●			
F-M27X200Y							●						●		
F-M36X200Y														●	●

Cylinder Accessory	SG/SGC				SC/SCL/SCF/SU/SUL/SUF						JSI						
	125	160	200	250	32	40	50	63	80	100	32	40	50	63	80	100	125
F-M10X125Y					●						●						
F-M12X125Y						●											
F-M14X150Y													●				
F-M16X150Y								●	●								
F-M18X150Y														●	●		
F-M20X150Y									●	●							
F-M22X150Y															●		
F-M26X150Y																●	
F-M27X200Y	●																●
F-M36X200Y		●	●														
F-M42X200Y				●													

Cylinder Accessory	MI						MPG						
	8	10	12	16	20	25	32	40	6	8	10	12	16
F-M3X050Y										●			
F-M4X070Y	●	●									●	●	
F-M5X080Y												●	●
F-M6X100Y			●	●									
F-M8X125Y					●								
F-M10X125Y						●	●						
F-M12X125Y								●					

### Dimensions

#### M10 and below

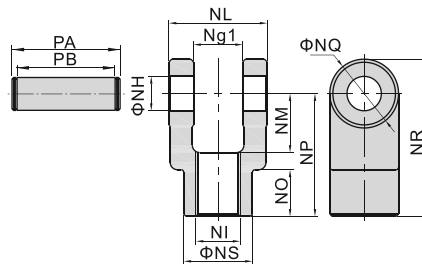


Type\Item	A	B	C	D	F
F-M3X050Y	15.5	12	5	6	6
F-M4X070Y	22	16	8	8	7
F-M5X080Y	28	21	10.2	12	10
F-M6X100Y	32	24	12	12	10
F-M8X125Y	42	32	16	16	14
F-M10X125Y	52	40	20	19	18

Type\Item	E	G	H	I
F-M3X050Y	M3×0.5	9	3	3
F-M4X070Y	M4×0.7	11.5	4	4
F-M5X080Y	M5×0.8	15.5	6.5	5
F-M6X100Y	M6×1.0	16	6	6
F-M8X125Y	M8×1.25	21	8	8
F-M10X125Y	M10×1.25	25	10	10

#### M14\M18\M22\M26

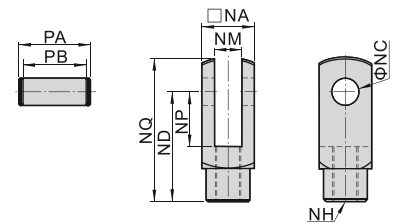


Type\Item	NG1	NH	NI	NL	NM
F-M14X150Y	14.2	10	M14×1.	27.8	19
F-M18X150Y	20.2	14	M18×1.	39.8	24
F-M22X150Y	30.2	22	M22×1.	59.8	34
F-M26X150Y	30.2	22	M26×1.	59.8	34

Type\Item	NONP	NQ	NR	NS	PA	PB	
F-M14X150Y	17	40	22	51	22	34.	28.8
F-M18X150Y	19	50	28	64	28	47	40.8
F-M22X150Y	20	65	40	85	40	69.	60.8
F-M26X150Y	20	65	40	85	40	69.	60.8

#### Others



Type\Item	NA	NC	ND	NP	NQ
F-M12X125Y	25.4	12	48	24	62
F-M16X150Y	32	16	64	32	80
F-M20X150Y	44.4	20	80	40	102
F-M27X200Y	54	30	110	55	139
F-M36X200Y	70	35	144	73	179
F-M42X200Y	85	40	168	86	211

Type\Item	NM	NH	PA	PB
F-M12X125Y	12	M12×1.2	32.4	26.2
F-M16X150Y	16	M16×1.5	39	32.8
F-M20X150Y	20	M20×1.5	53.4	45.2
F-M27X200Y	30	M27×2.0	64.2	54.8
F-M36X200Y	35	M36×2.0	80.2	70.8
F-M42X200Y	40.	M42×2.0	115	93

